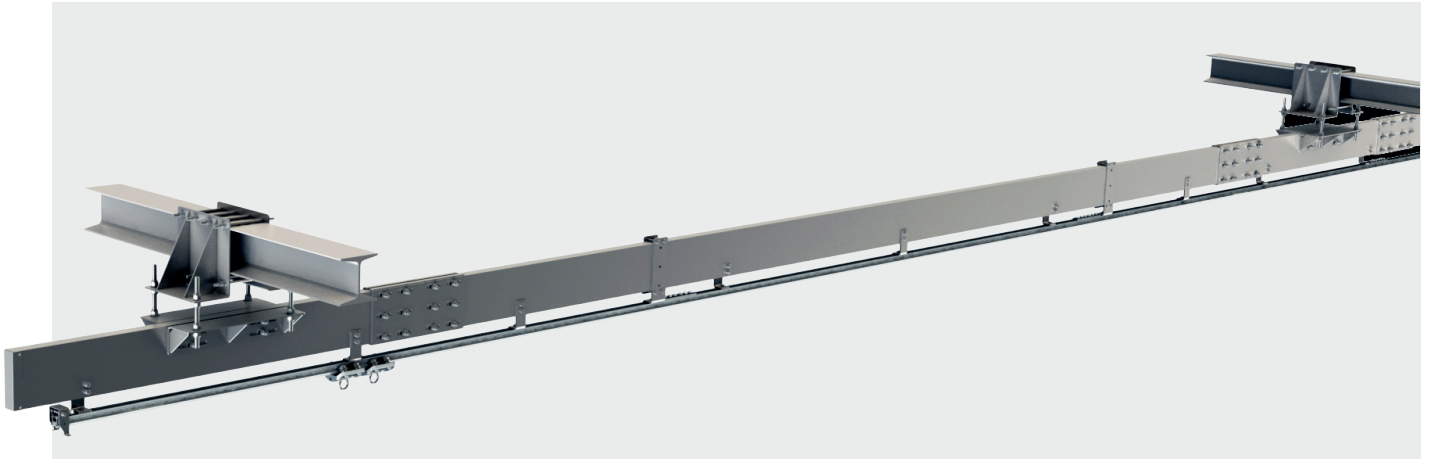


ACCEN RAIL LONG



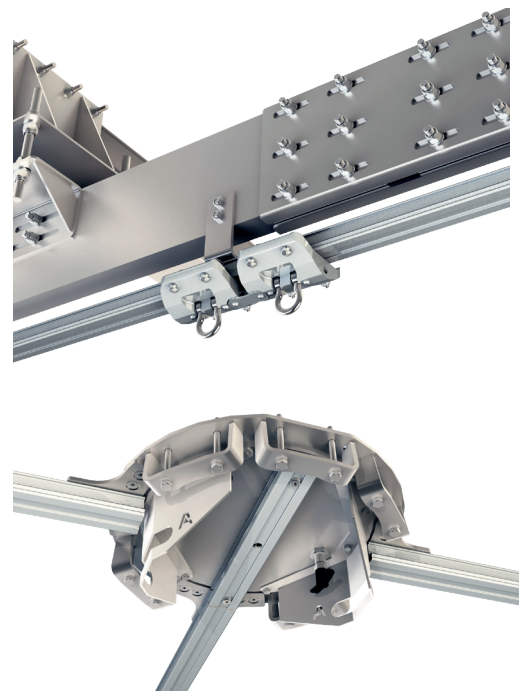
The ACCEN RAIL LONG horizontal fall arrest system has been developed for use on a horizontal plane where the incline of the system does not exceed $\pm 5^\circ$. The ACCEN RAIL LONG fall arrest system is a special horizontal aluminium rail, operating as a guide rail, in which a low friction anchor trolley travels. If there are two rails perpendicular to each other, a special switch is fitted that allows for transferring the trolley from one rail to another. A movable section of the rail, referred to as entrance section, allows for mounting the trolley in one of the several points along the rail.

High rail stiffness, additionally increased by a special profile, ensures that the rail bends only slightly, with distance between the brackets of up to 8 metres. The rail assembly is used as a fall protection system and a means of access to exterior walls.

The ACCEN RAIL LONG system can be attached, among other things, to walls, floor slabs, ceilings in places where there is a risk of fall, where rail incline does not exceed $\pm 5^\circ$. The ACCEN RAIL LONG system is very effective as a solution preventing falls from heights and, in individual cases, as a solution providing access in the case of rope access jobs.

System sub-assemblies are used to install the system as a whole, which allows for selecting components appropriate for a particular surface or base.

All sub-assemblies of the ACCEN RAIL LONG system are made of anodised aluminium and stainless steel. An inherent component of the system is a rating plate that provides essential information about the system, the installer's particulars and the date of a valid inspection allowing the system to be operated.



Technical Specifications

Material:	ALUMINUM, INOX
Dimensions of a single rail:	3 m
Distance between brackets:	max 8 m
Users:	no more than two people on the rail section
Norm:	EN795 TYP D, CEN/TS 16415
Warranty:	1 year