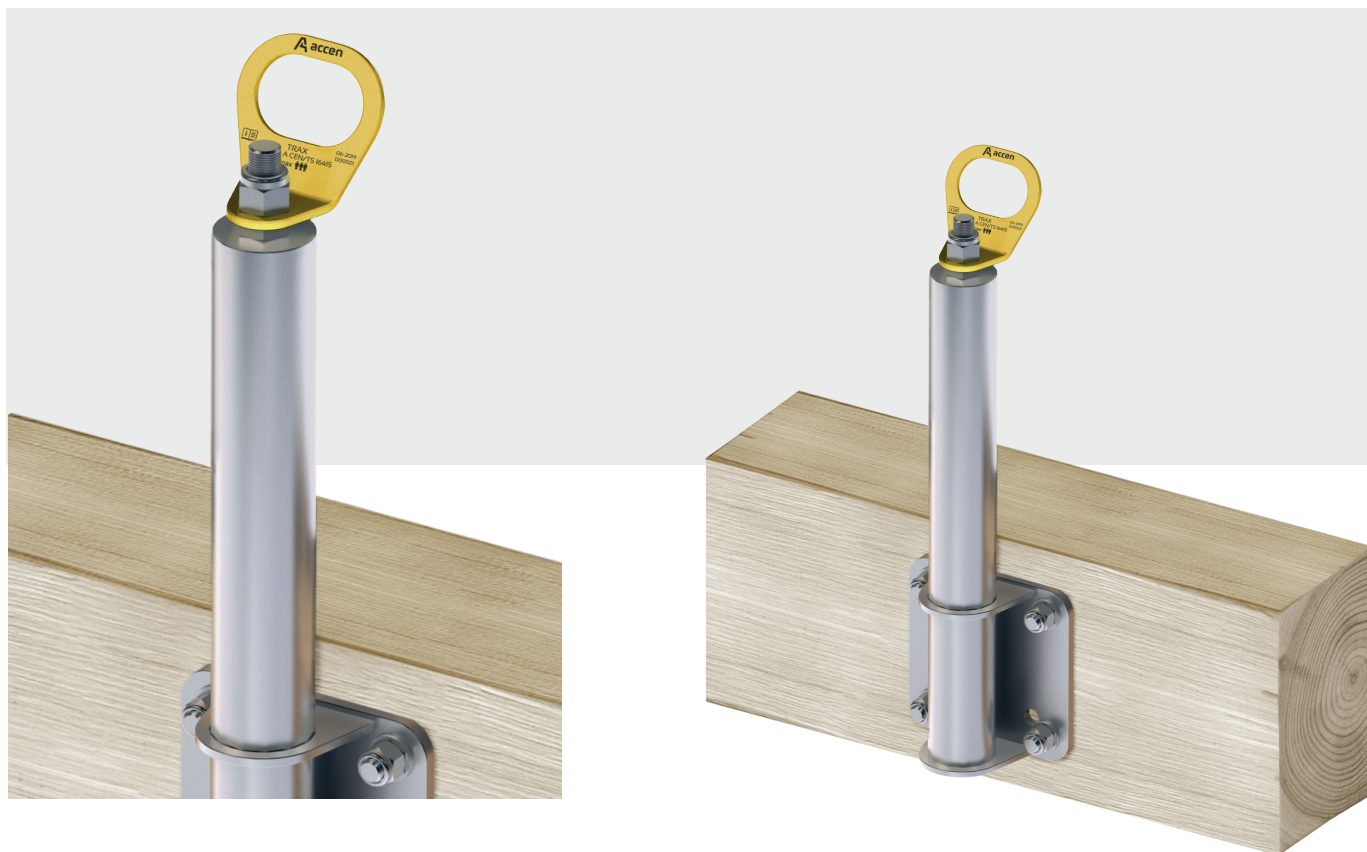


AXIS DB

Safety point



The Axis DB safety post is an anchoring device fixed to a C24 class timber beam and is used to secure personal protective equipment against falls from a height.

The AXIS DB safety post complies with the requirements of Type A/C standard EN 795: 2012 and technical specification CEN / TS 16415: 2013, and is permanently installed for C4 class timber. The beam must be at least 1450 mm high and 100 mm wide in cross-section. AXIS DB is intended as an end and corner support in the AccenLine cable system. When installed with a Trax badge, it can be used as a free-standing post. It is fixed with 4 M12 metric threaded rods.

Technical Specifications

Material:	INOX
Weight:	3,9 kg
Height:	300-600 mm
Base dimensions:	140x140mm
Diameter:	Ø 52 mm
Users:	3
Norm:	EN 795 typ A/C, CEN/TS 16415: 2013
Warranty:	1 year

Mounting substrates:

Structural timber of C24 class